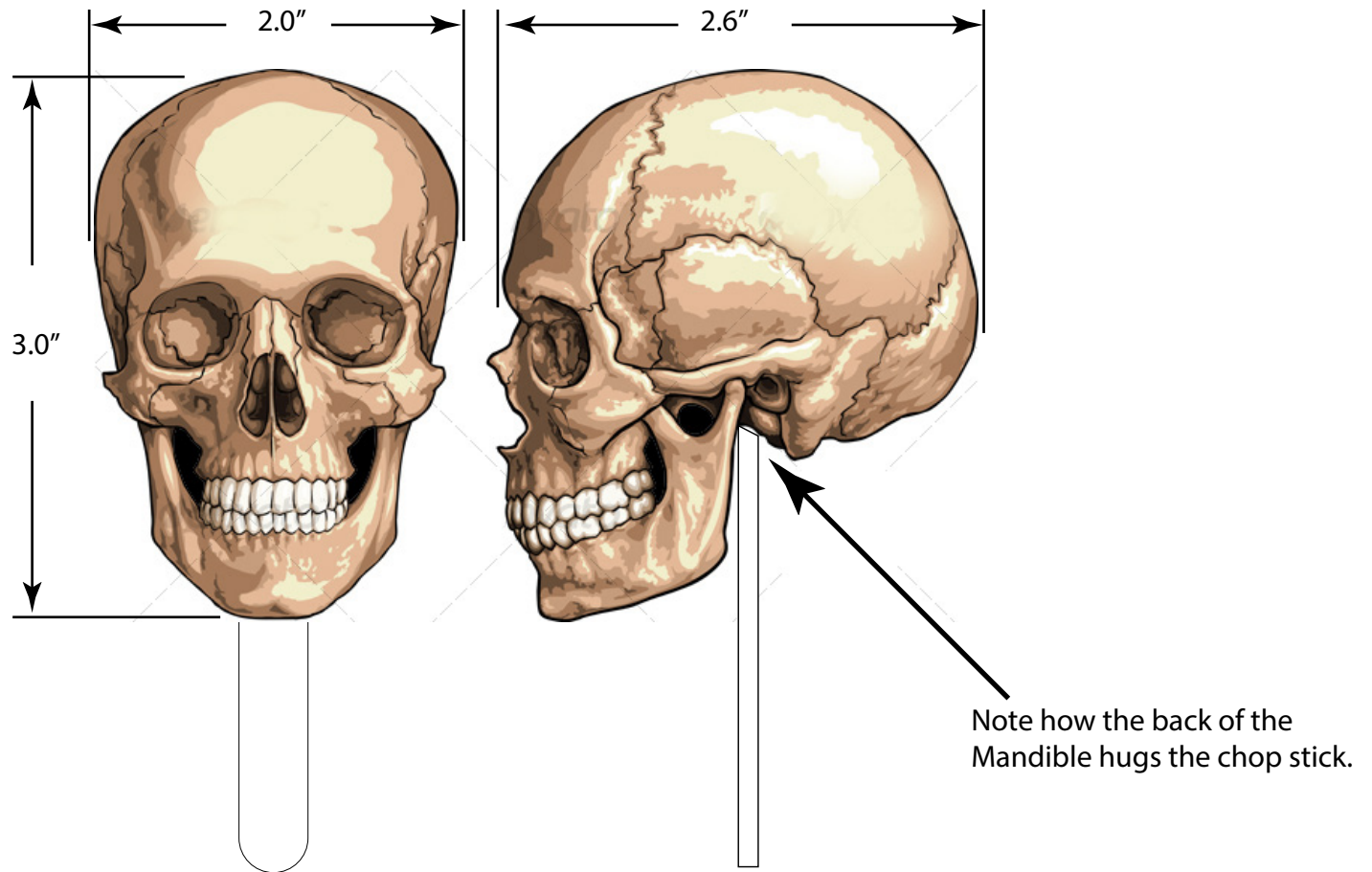


# Skull Maquette Study

Creature sculptors typically work from drawings drawn by other artists. Size and scale is critical.

Measure these front and side views and use them as guides for your sculpt.



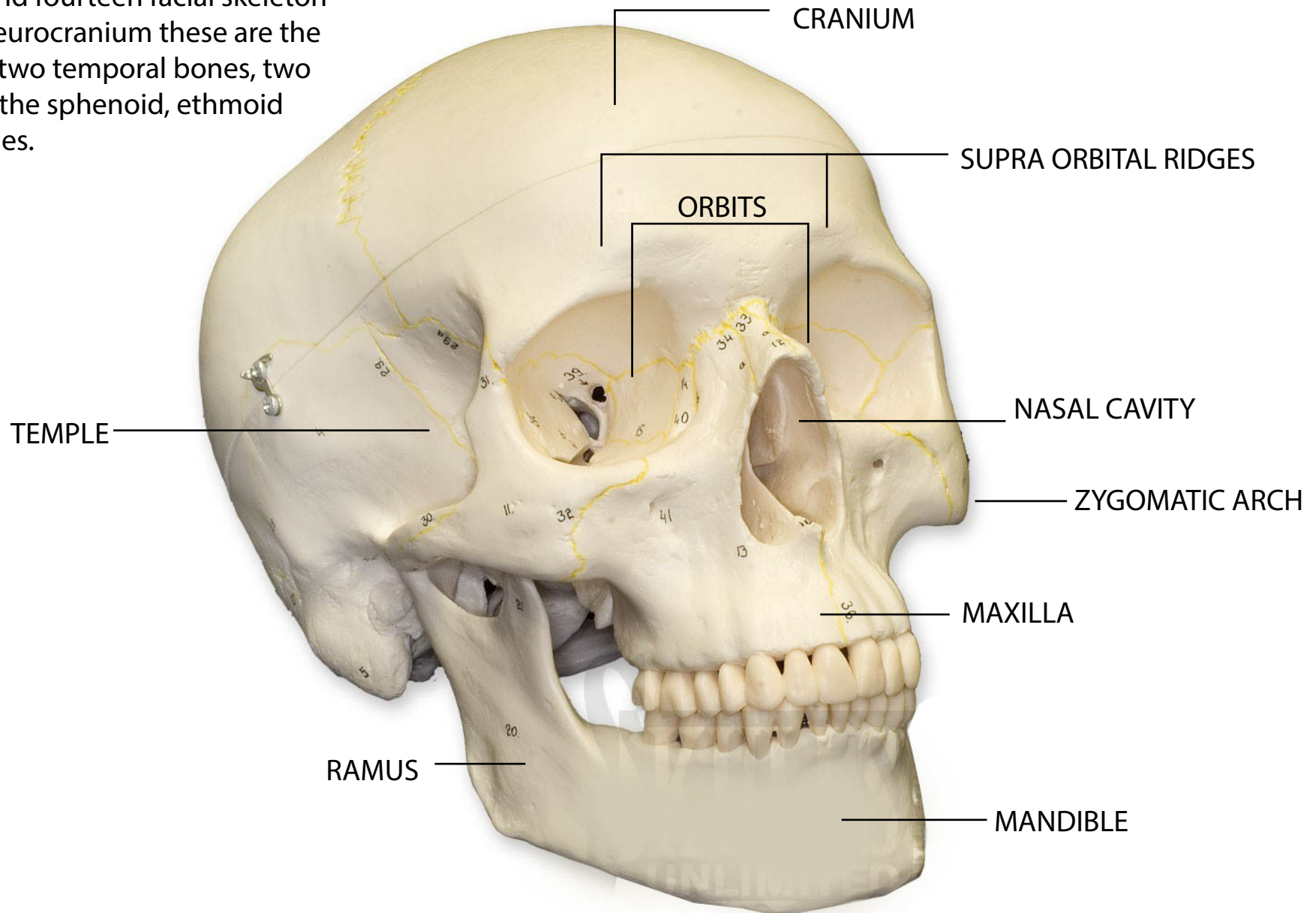
Vertebrates share the same bone structure to a large degree.

Understanding the human bone structure allows the artist to easily create believable animals and creatures.

What's underneath the flesh determines what we see on the surface.

# HUMAN SKULL

The human skull is generally considered to consist of twenty-two bones—eight cranial bones and fourteen facial skeleton bones. In the neurocranium these are the occipital bone, two temporal bones, two parietal bones, the sphenoid, ethmoid and frontal bones.



# Human Skull

This diagram illustrates the steps you should follow for completing this project.

