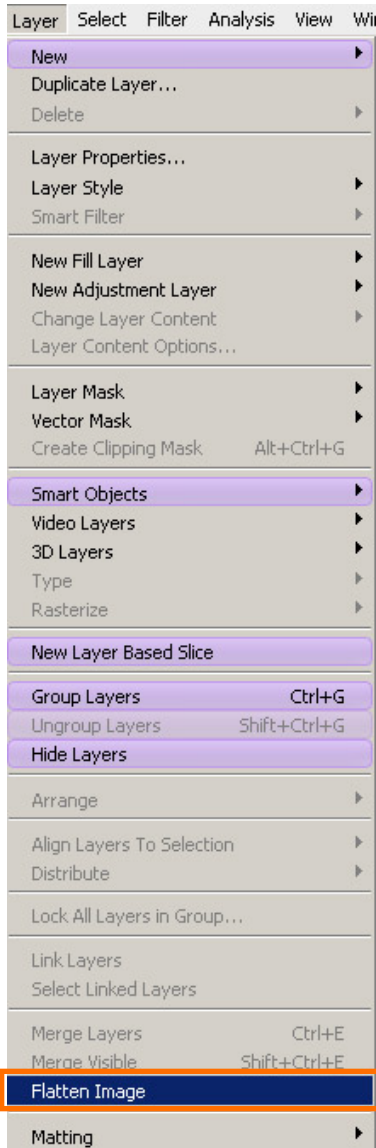


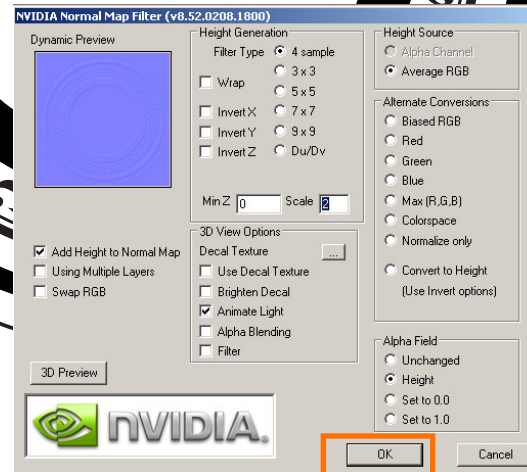
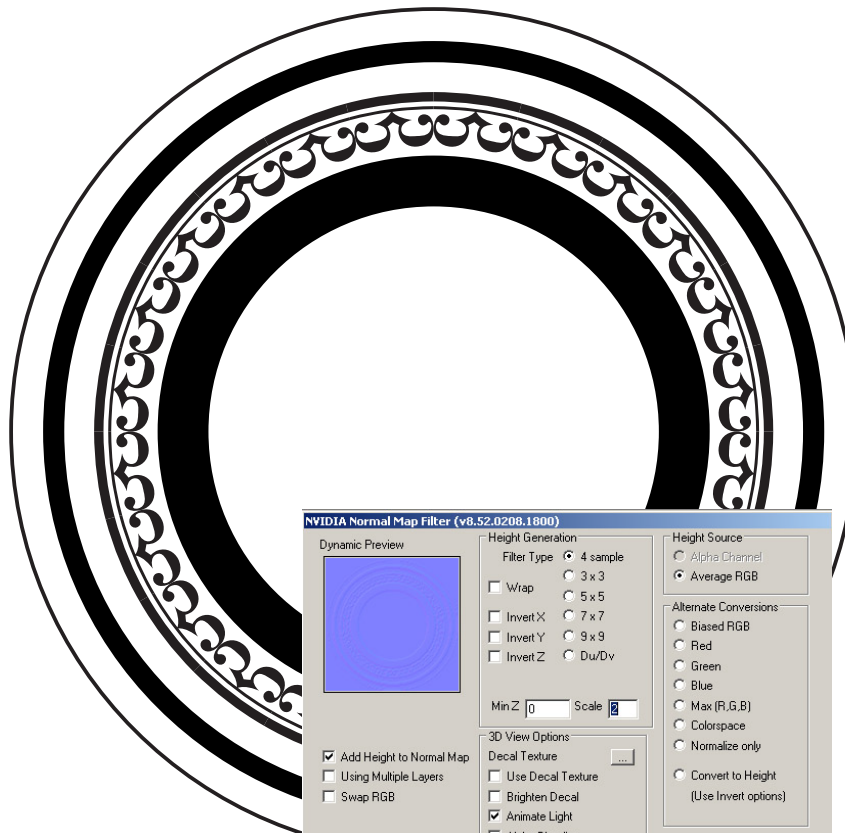
You will now open the sheild design in Adobe PhotoShop and convert it into a Normal Map.

11. On the file menu select "Open" and find your Adobe Illustraor sheild design and open it.

12. Next you need to flatten the file.

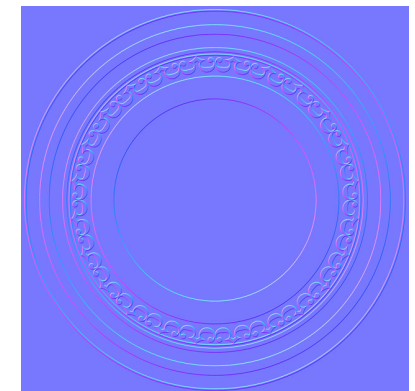
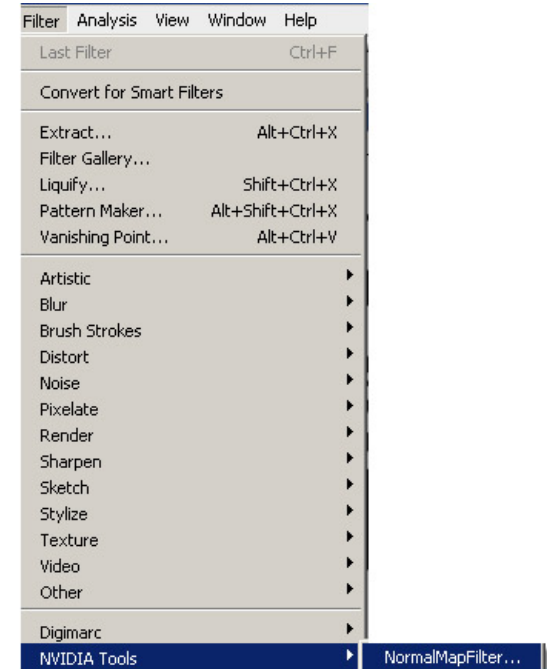


13. Now size the image to 512x512 pixels



15. Select "OK"

14. Open the NVidia "NormalMapFilter".



16. The design will look something like this. Save this as Targa file.