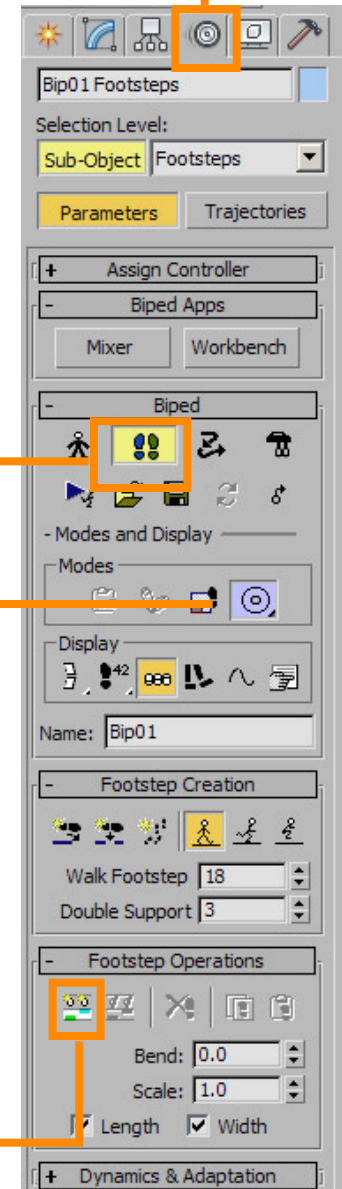
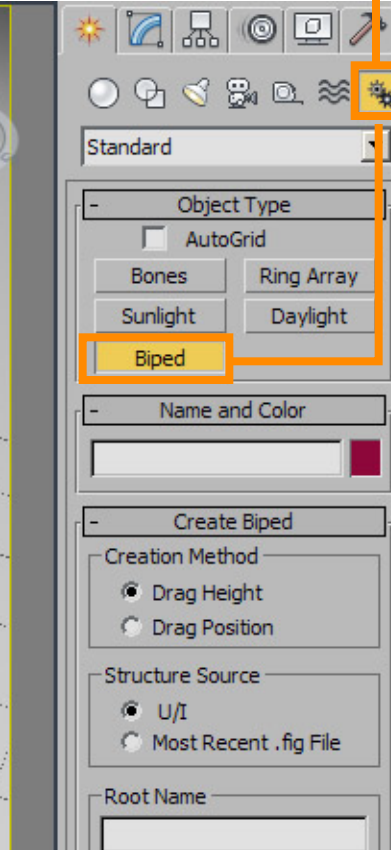
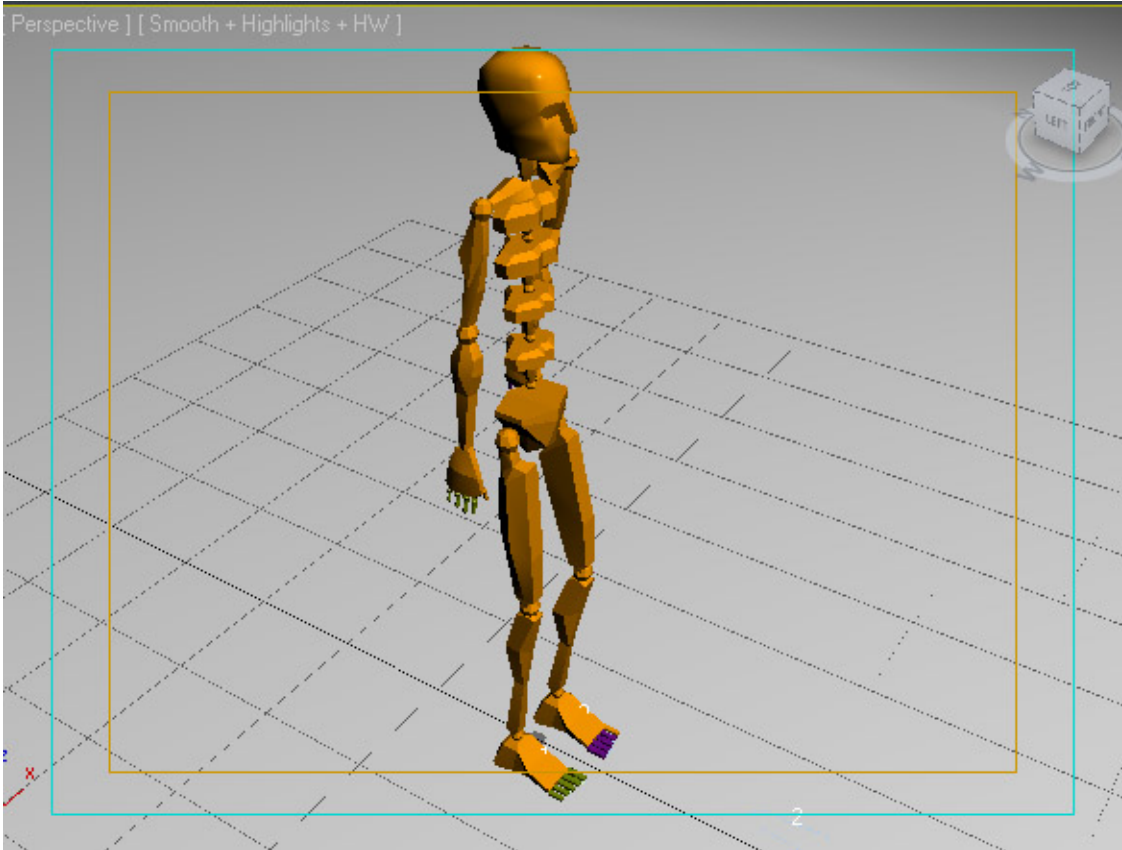


# USING THE BIPED

Beginning Skill Level

1. The Biped is found under "Systems"

3. Select the "Motion" panel



2. Select the Biped button in the Perspective viewport, click and drag a biped figure.

4. Open the "Foot Steps" panel and type in 12 steps.

5. Select "In Place Mode".

6. Click "Create Keys".

**Last, click the Play button on the timeline.**