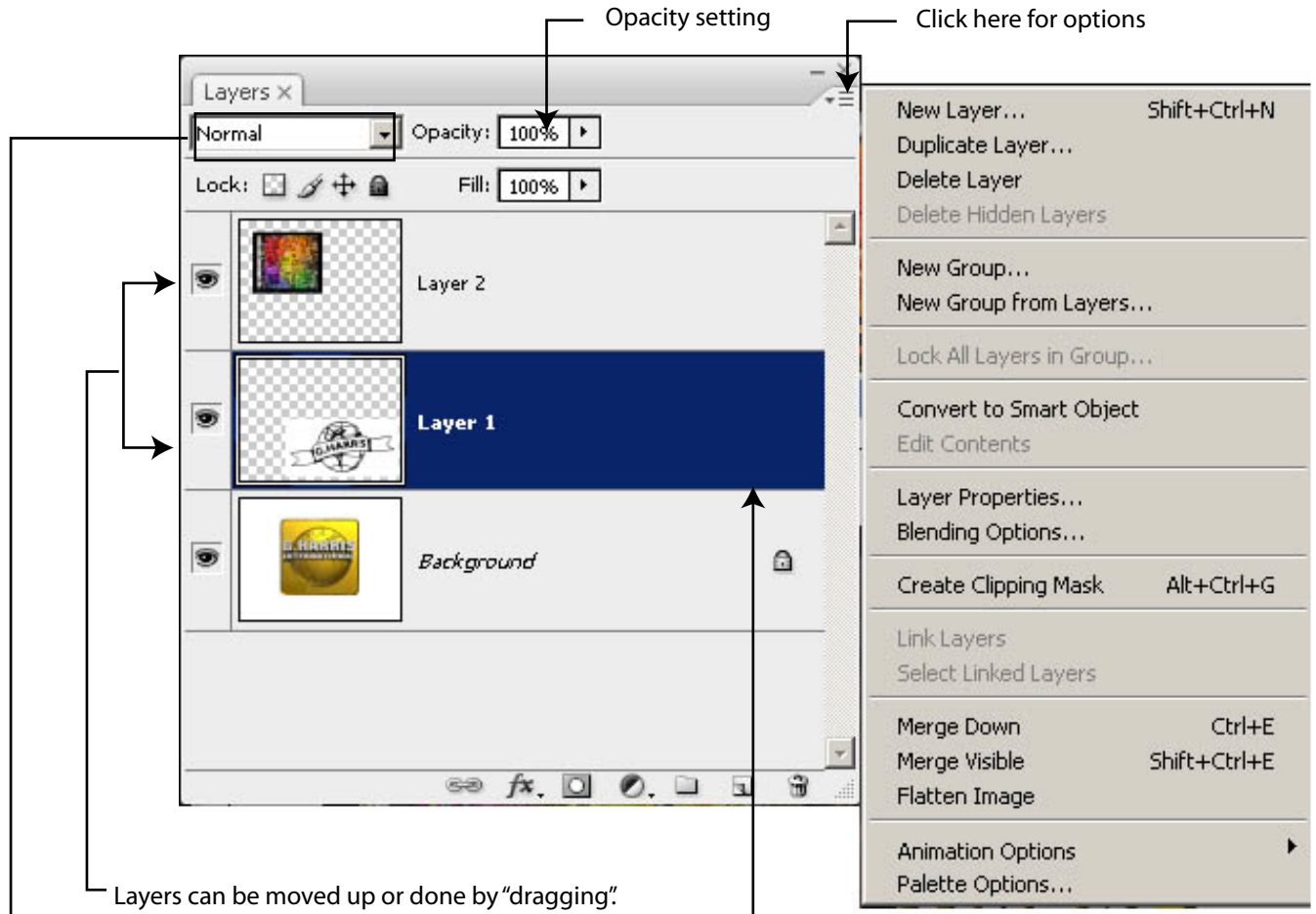


# Layers

PhotoShop, similar to Illustrator, use "layers". Layers allow you to keep the various elements of your project (text, photos, painting effects ect.) seperated. This allows you work on any element without disturbing another element. There are types of layers as well (adjusting, masking etc)

The "Layers" panel is found under the "Window" menu



Double clicking in the blue area of a selected layer brings up the "Layer Style" panel

The Layer Style panel has many effects that enhance the elements on a layer.

