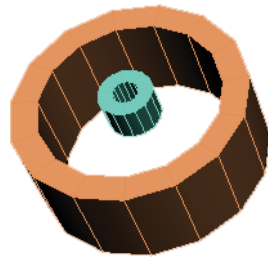


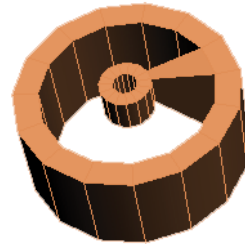
# Box Modeling - Rim



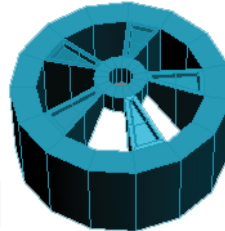
1. The sequence below illustrates the development of the rim.



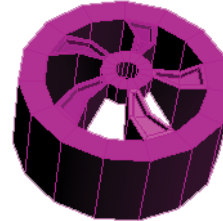
Two Tubes - 15 sides each



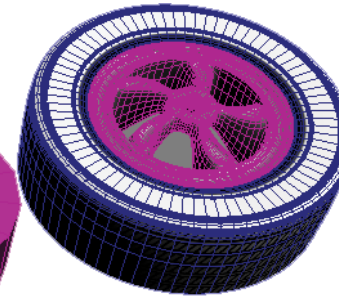
Add the Edit Poly to the large tube and "Attach" the small tube. Select a poly on the large tube and one on the small tube. Bridge the polys together.



Select & Bevel



Spin axis



Add a TurboSmooth and place the tire

