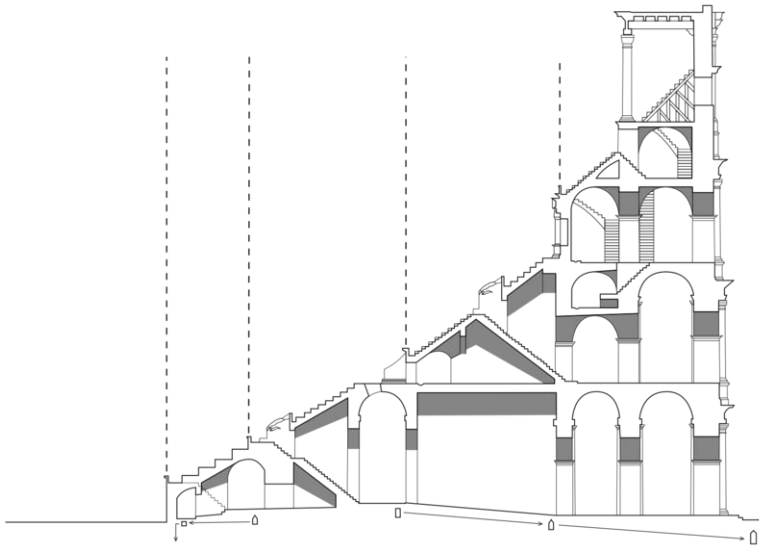


One of the great architectural masterpieces of all time, the Roman Colosseum



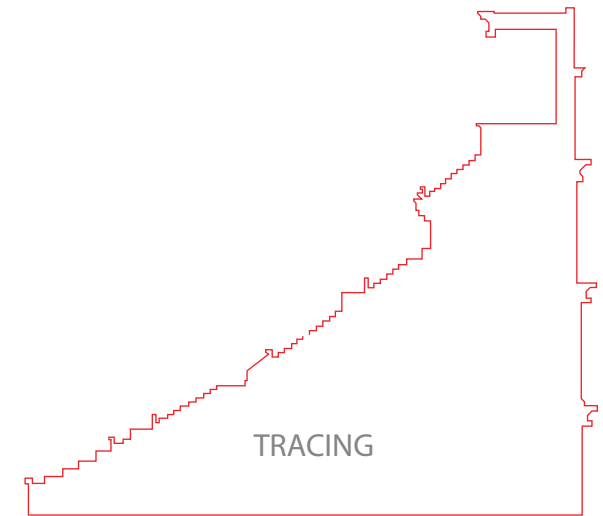
1. There is a copy of this image on the class website. Copy and paste it into Adobe Illustrator.

Use the "Pen Tool" to trace it as closely as possible.

Note that the inner archways can be shaped more easily in 3D Max using the "Fillet" tool in the "Edit Spline" modifier.



New Skills: Adobe Illustrator Pen Tool, Edit Spline & Fillet,

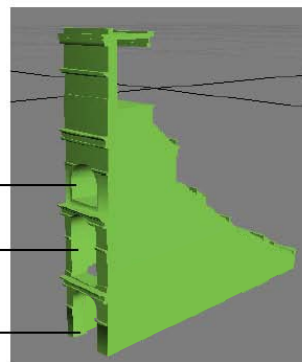
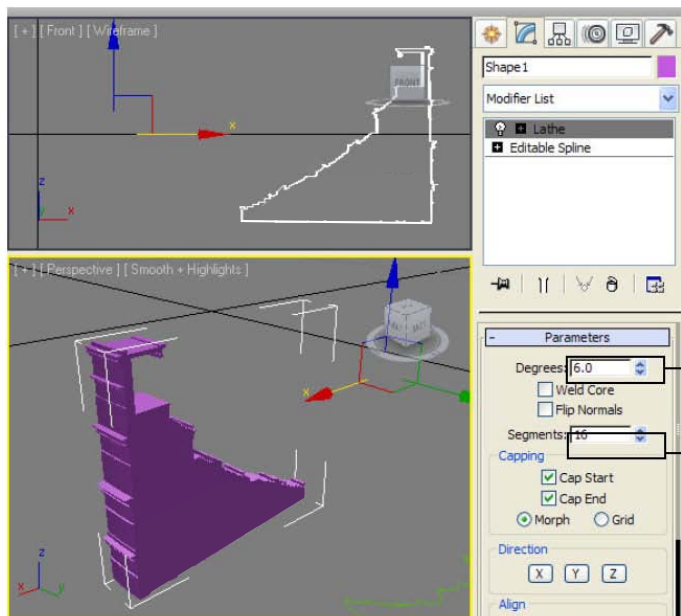


2. Delete the image and save the drawing as an Adobe Illustrator 8.0 file.

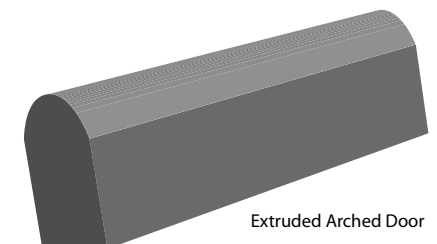
3. Open 3D Max and "import" this file

4. Set the "Pivot Point" and "Lathe" the spline 6 degrees with 6 segments as shown.

5. Use the Line tool to draw an arched door. Extrude & Proboolean.



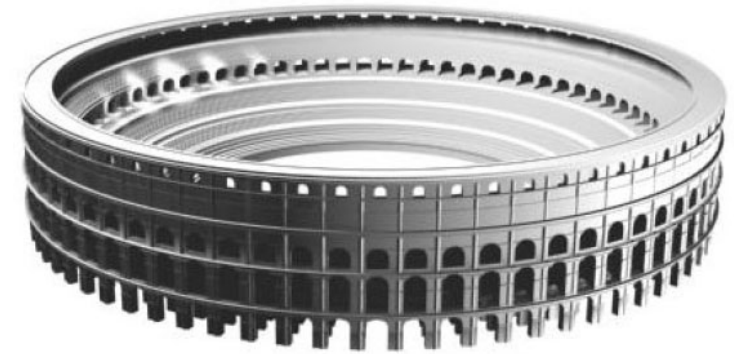
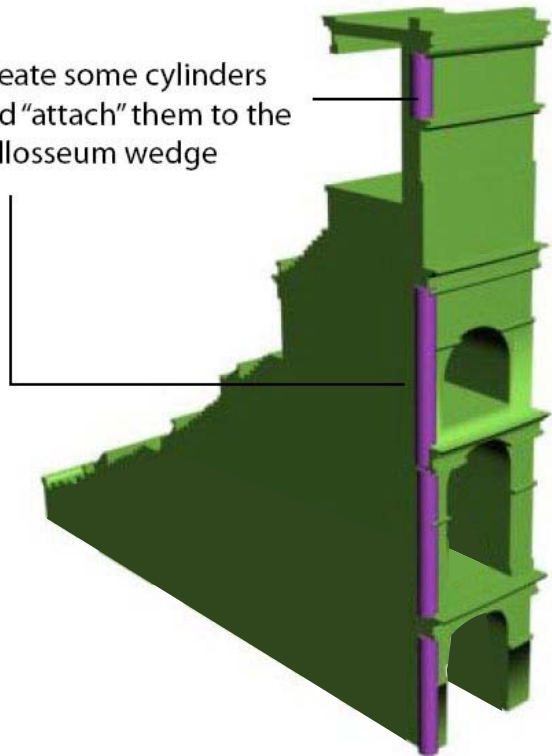
Arched Door Shape



Extruded Arched Door

New Skills - Arrays

1. Create some cylinders and "attach" them to the colosseum wedge



2. Open the "Array" panel and use the settings in the diagram below.

